



FOR LEASE
Newport Plaza Shopping Center
100 SW Coast Hwy 101
Newport, OR 97365

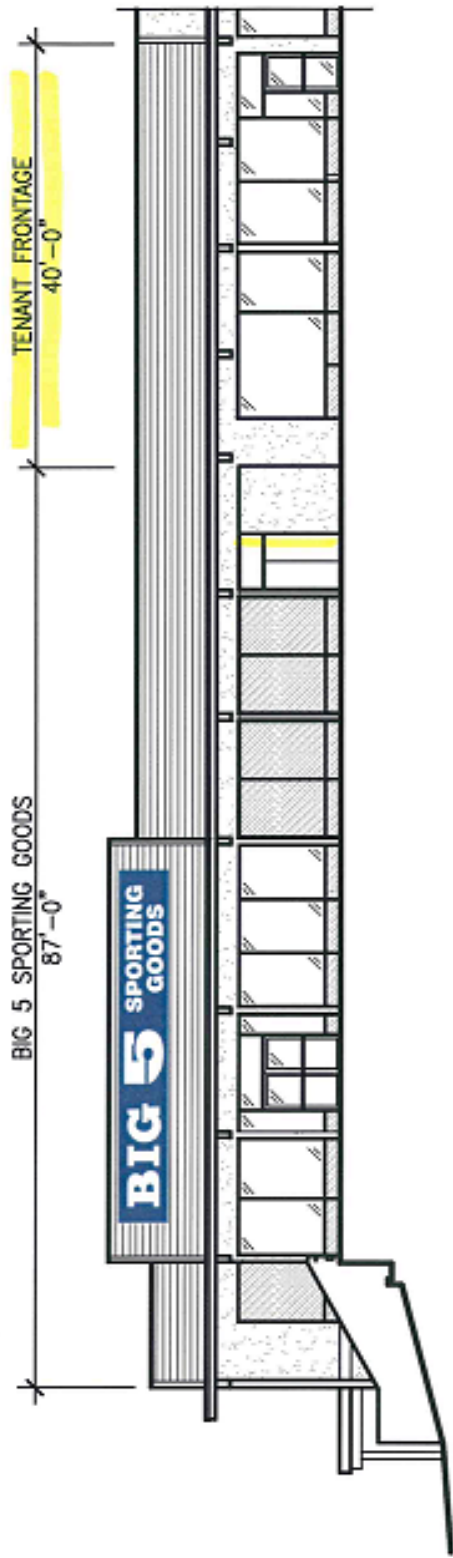
Description: The space available for lease is approximately 2,400 sq. ft. in size as depicted on the attached floor plan. The space is adjacent to a planned Big 5 Sporting Goods. Big 5's scheduled opening is during the first quarter of 2015. All utilities are available to the space. Finished ceiling height is approximately 10'. The space has excellent exposure to Hwy 101, with ample parking provided throughout the shopping center. Newport Plaza Shopping Center is at the SW corner of Oregon Coast Hwy 101 and Hwy 20; arguably one of the busiest intersections on Coast Hwy 101 in the State of Oregon.

Lease Rate: \$1.65/sf/month/NNN. Tenant shall be responsible for their pro rata share of real estate taxes and common area maintenance charges.

Alan Wells, CCIM
Commercial Associates
202 NW 6th Street
Corvallis, OR 97330
(541) 754-6320 • Fax: (541) 758-0508
E-mail: alan@commercialassociates.org
www.commercialassociates.org



The information contained herein was secured from sources deemed reliable but is not guaranteed by broker and is subject to price change, prior sale, error or omission, correction or withdrawal without notice.



EAST ELEVATION

1/16" = 1'-0"

ELEVATIONS WITH BIG 5 SIGN



15805 SW 72ND AVE SUITE 200
 PORTLAND, OREGON 97224
 TEL: 503.226.1285
 FAX: 503.226.1870
 WWW.CIDAING.COM

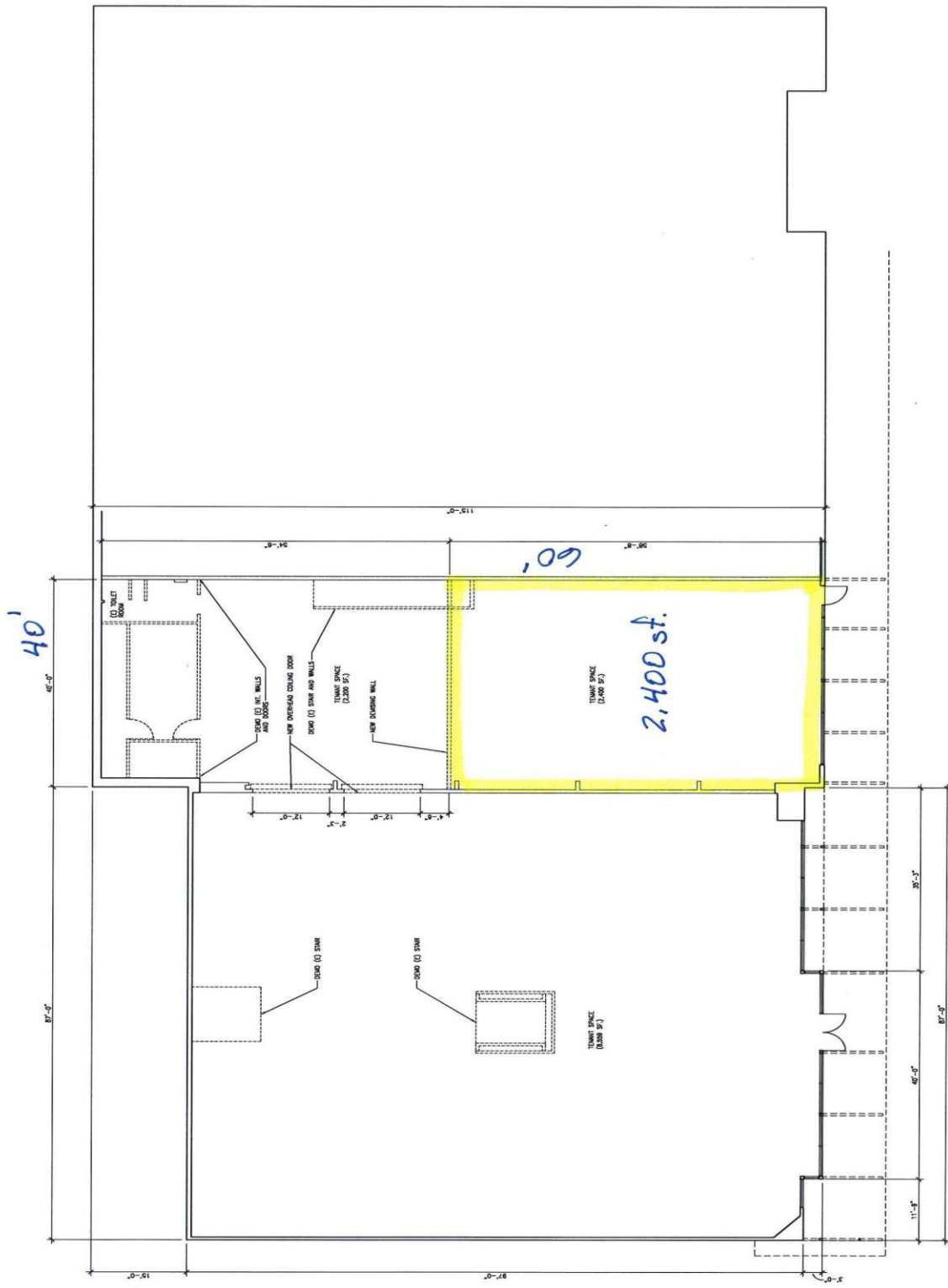
BIG 5 SPORTING GOODS

120 SOUTH COAST HWY.
 NEWPORT, OREGON

5/22/14

130216.01

DISCLAIMER:
 BACKGROUND DRAWINGS WERE ORIGINALLY PROVIDED TO CIDA AND GENERAL LAYOUT AND ALTERATIONS HAVE NOT BEEN VERIFIED. CIDA HAS PROVIDED NO FIELD MEASUREMENTS OF EXISTING CONDITIONS. CONDITIONS SHOWN REPRESENT MEASUREMENTS AND PICTURES PROVIDED BY THE CLIENT. NOTIFY A/E OF DISCREPANCIES.



PROPOSED FLOOR PLAN MODIFICATIONS
BIG & SPORTING GOODS
 100 SOUTH COAST HWY.
 NEWPORT, OREGON

K&N ARCHITECTURE
 1111 1/2 AVENUE, SUITE 100
 NEWPORT, OREGON 97156
 TEL: 503.265.1111 FAX: 503.265.1112
 WWW.KANDNARCHITECTURE.COM