



# FOR SALE

## 1360 SE Godsey Rd Dallas, Oregon

**Description:** A vacant parcel of approximately 4.08 acres located at the NW corner of the intersection of SE Godsey Rd and Clow Corner Rd (also known as Monmouth Cut Off Rd.), The Property has direct access to Hwy 99W via Monmouth Cut Off which then gives access to Salem, and Corvallis. The property is within the city limits of Dallas. All City utilities are nearby. The intersection of Godsey Rd and the Monmouth Cut Off Road will be improved this summer. Please refer to Agent for additional information.

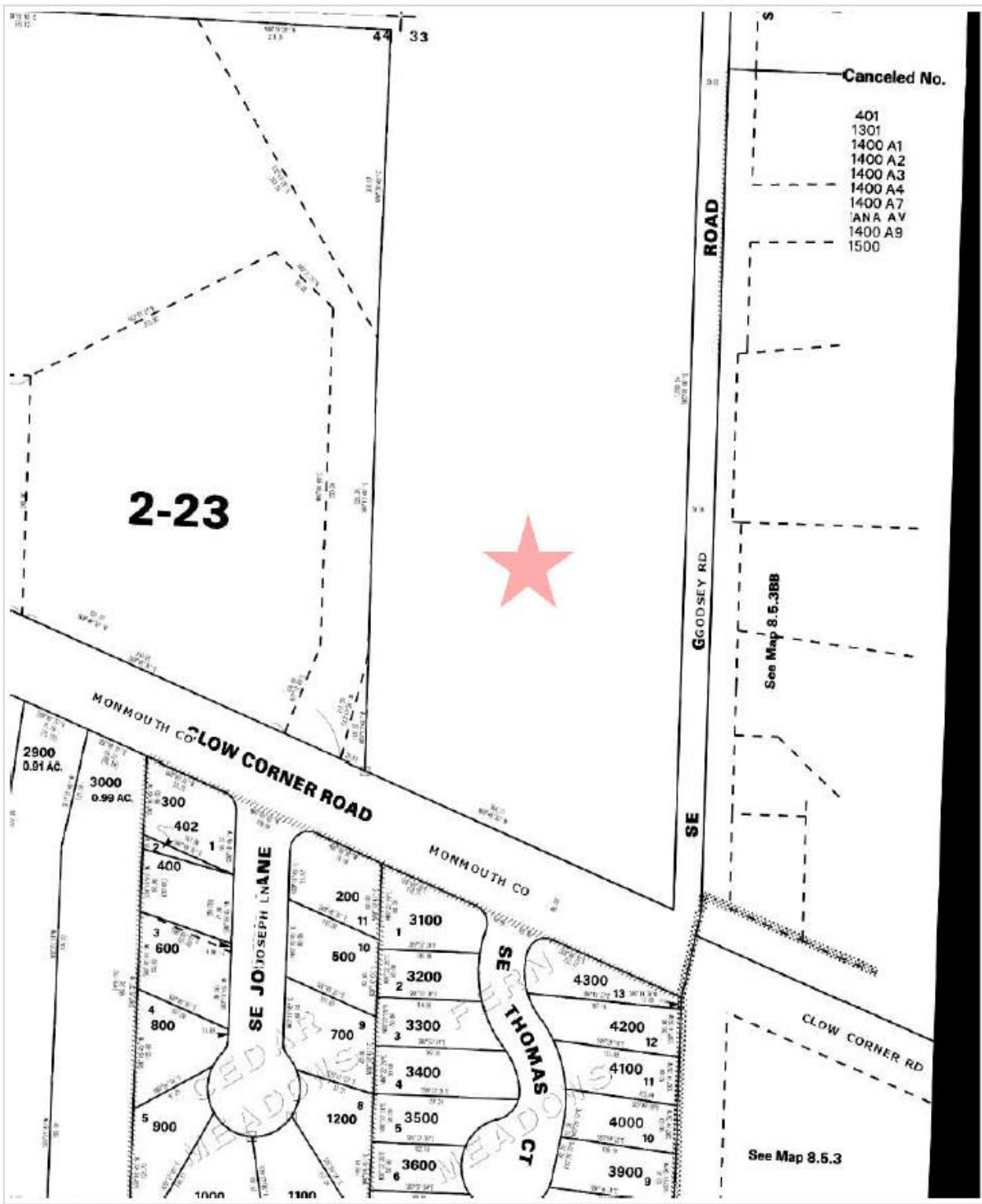
**Taxes:** \$19,33.89 (2018 / 2019)

**Sale Price:** \$622,000 (\$3.50/sq.ft.)

Alan Wells, CCIM  
Commercial Associates  
202 NW 6<sup>th</sup> Street  
Corvallis, OR 97330  
(541) 754-6320 • Fax: (541) 758-0508  
E-mail: [alan@commercialassociates.org](mailto:alan@commercialassociates.org)  
[www.commercialassociates.org](http://www.commercialassociates.org)



The information contained herein was secured from sources deemed reliable but is not guaranteed by broker and is subject to price change, prior sale, error or omission, correction or withdrawal without notice.



Parcel ID: 186782



Parcel ID: 186782