

# FOR LEASE

1927 HWY 20 NW ♦ ALBANY, OR



- ♦ **2,224 RSF nicely remodeled professional office.**
- ♦ **Located near North Albany with Hwy exposure**
- ♦ **Reception/waiting, conference and private offices, break/kitchen area, patio, and on-site parking.**
- ♦ **Rate starting at only \$2,250 per month gross**



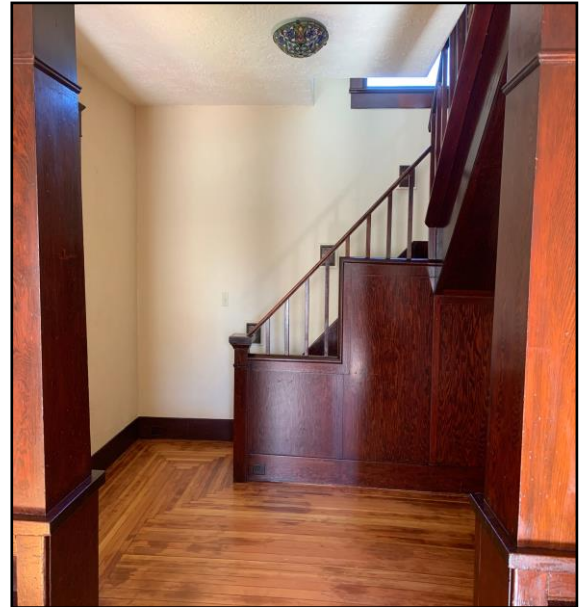
**GARY POND, CCIM**

PRINCIPAL BROKER  
COMMERCIAL ASSOCIATES  
202 NW 6TH STREET  
CORVALLIS, OR 97330  
CELL: (541) 760-1973  
FAX: (541) 758-0508  
EMAIL: GARY@COMMERCIALASSOCIATES.ORG  
WWW.COMMERCIALASSOCIATES.ORG

**OFFICE: (541) 754-6320**

The information contained herein was secured from sources deemed reliable but is not guaranteed by broker and is subject to price change, prior sale, error omission, correction or withdrawal without notice.

# 1927 HWY 20 NW ALBANY, OREGON



**GARY POND, CCIM**

PRINCIPAL BROKER  
COMMERCIAL ASSOCIATES  
202 NW 6TH STREET  
CORVALLIS, OR 97330  
CELL: (541) 760-1973  
FAX: (541) 758-0508  
EMAIL: [GARY@COMMERCIALASSOCIATES.ORG](mailto:GARY@COMMERCIALASSOCIATES.ORG)  
[WWW.COMMERCIALASSOCIATES.ORG](http://WWW.COMMERCIALASSOCIATES.ORG)

**(541) 754-6320**

The information contained herein was secured from sources deemed reliable but is not guaranteed by broker and is subject to price change, prior sale, error omission, correction or withdrawal without notice.

# 1927 HWY 20 NW ALBANY, OREGON



**GARY POND, CCIM**

PRINCIPAL BROKER  
COMMERCIAL ASSOCIATES  
202 NW 6TH STREET  
CORVALLIS, OR 97330  
CELL: (541) 760-1973  
FAX: (541) 758-0508  
EMAIL: GARY@COMMERCIALASSOCIATES.ORG  
WWW.COMMERCIALASSOCIATES.ORG

**(541) 754-6320**



The information contained herein was secured from sources deemed reliable but is not guaranteed by broker and is subject to price change, prior sale, error omission, correction or withdrawal without notice.